

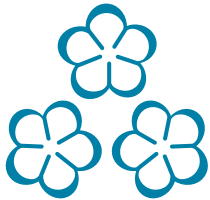
LEADING HVACR MANUFACTURER OF CONTROLS & COMPONENTS

QUALITY THAT PERFORMS

sanhuausa.com



STRONG GLOBAL PRESENCE WITH A PERSONAL APPROACH



As the largest producer of Service Valves, Reversing Valves, Electronic Expansion Valves and Microchannel (HVACR) in the world, Sanhua has earned the trust of major HVACR brands globally. Quality is the foundation for every product manufactured resulting in world class parts per million numbers. When you want the best, you want Sanhua.



Visit us at sanhuausa.com to learn more about our entire product line up.



FILTER-DRIERS

Stops Contaminants, Moisture & Acid

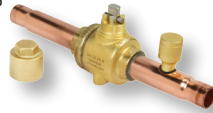
- System protector for optimum performance and efficiency
- Effective and Efficient: Filters solid particles, adsorbs moisture and removes acid
- Large filtering area removes solid particle contamination to an extremely low level of 20 microns



BALL VALVES

Access the System with Minimal Pressure Drop

- Machined out of high quality C360 alloy brass for high tensile strength
- Easy to operate with 1/4 turn open and close
- Reliable welded design
- 700 psig working pressure rating



THERMOSTATIC EXPANSION VALVES

Control Superheat

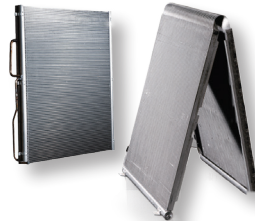
- Adjusts mass flow of refrigerant into the evaporator while controlling the refrigerant's superheat
- Thermal bulb utilizes cross charge technology
- Wide evaporator temperature range
- Reliable and stable performance



MICRO-CHANNEL HEAT EXCHANGERS

Smaller surface with larger benefits

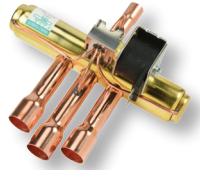
- World's largest MCHE producer for the HVACR industry
- Smaller footprint and lighter weight than fin and tube
- Uses less refrigerant
- Lower air side pressure drop
- Recyclable



REVERSING VALVES

The Leader in Manufacturing the World's Most Reliable Reversing Valve

- Solder connection at pilot tube and valve for increased reliability & low leakage risk
- Suitable for capacities from 1-120 tons
- Maximum operating pressure of 650 psig
- Available bi-stable coil provides energy savings



SIGHT GLASSES

Detect Moisture & Liquid Level Instantly

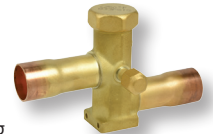
- Easy to read wide angle sight glass
- High precision color indicator
- Corrosion resistant brass body
- Indicator designed to prevent surface contamination



SERVICE VALVES

Your Trusted Access Point

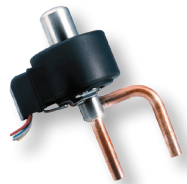
- Corrosion resistant
- Ability to handle low pressure drops and environmental conditions
- Maximum operating pressure of 600 psig
- 100% Factory leak tested



ELECTRONIC EXPANSION VALVES

The Future of HVACR

- Fast cooling, precise temperature control and power saving
- Step valves for accurate refrigerant flow control
- 500 steps (full stroke) - Unipolar with 12V DC rated voltage
- Nominal capacity range: 0.7 - 21 tons
- Smaller installation space: low height, small volume and lightweight



WHERE QUALITY IS THE FOUNDATION FOR EVERY PRODUCT

When you partner with us, you can expect...



On-time delivery

World-Class team

Excellent customer support

Value backed by quality

Reliability - Trusted by global HVACR brands

Did you know?

2 out of 3 A/C units are equipped with a Sanhua Reversing Valve

23

1 out of 4

Every 4th car is equipped with a Sanhua Expansion Valve

Largest Producer of Micro-Channel Heat Exchangers for stationary HVACR application

30%

Sanhua's Inverter technology improves efficiency by 30%